

Online Appendix:
Are Universities Becoming More Unequal?

Yan Lau*

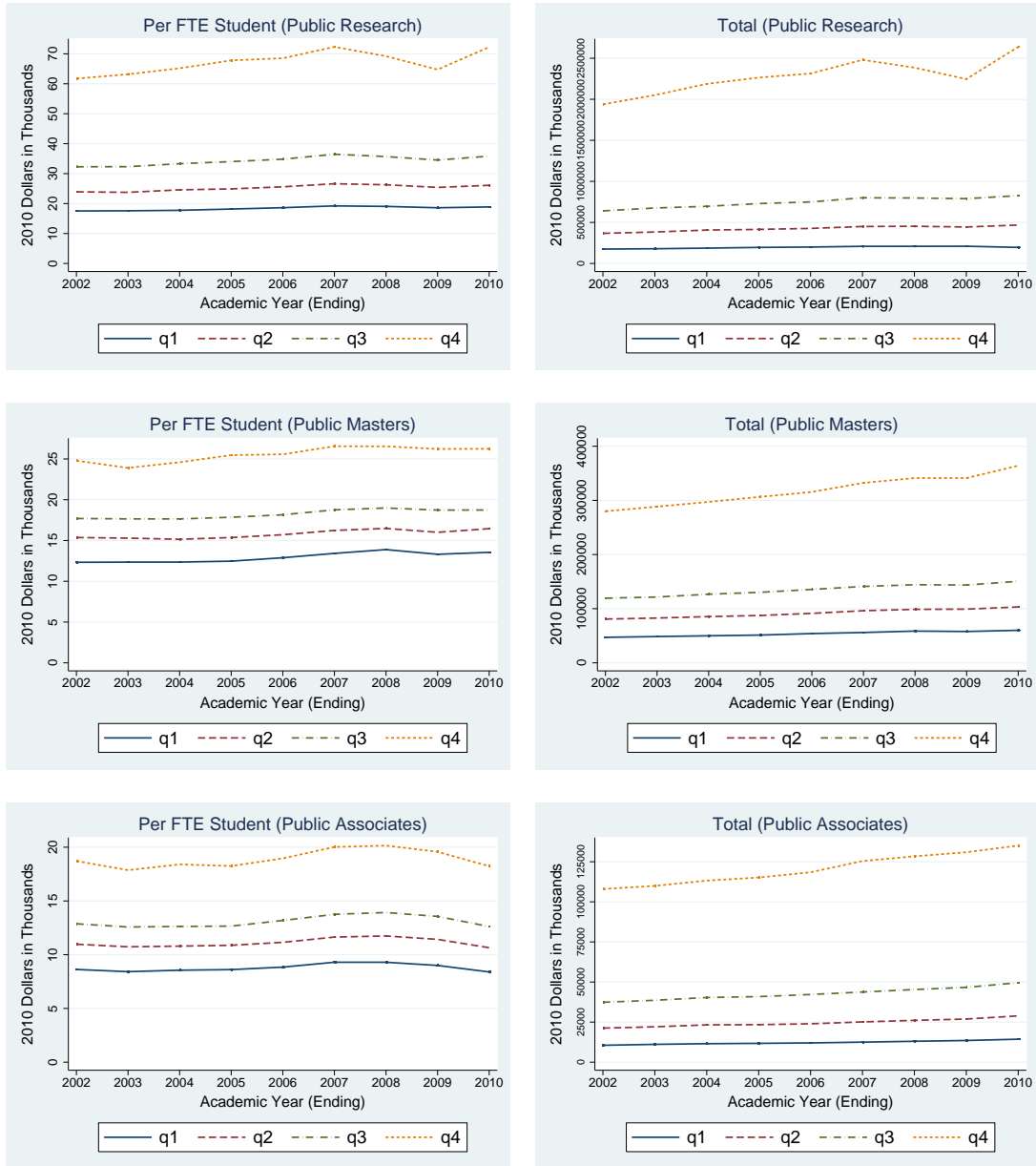
Harvey S. Rosen†

July 2015

*Economics Department, Reed College, Portland, Oregon 97202. [Email: yanlau@reed.edu]

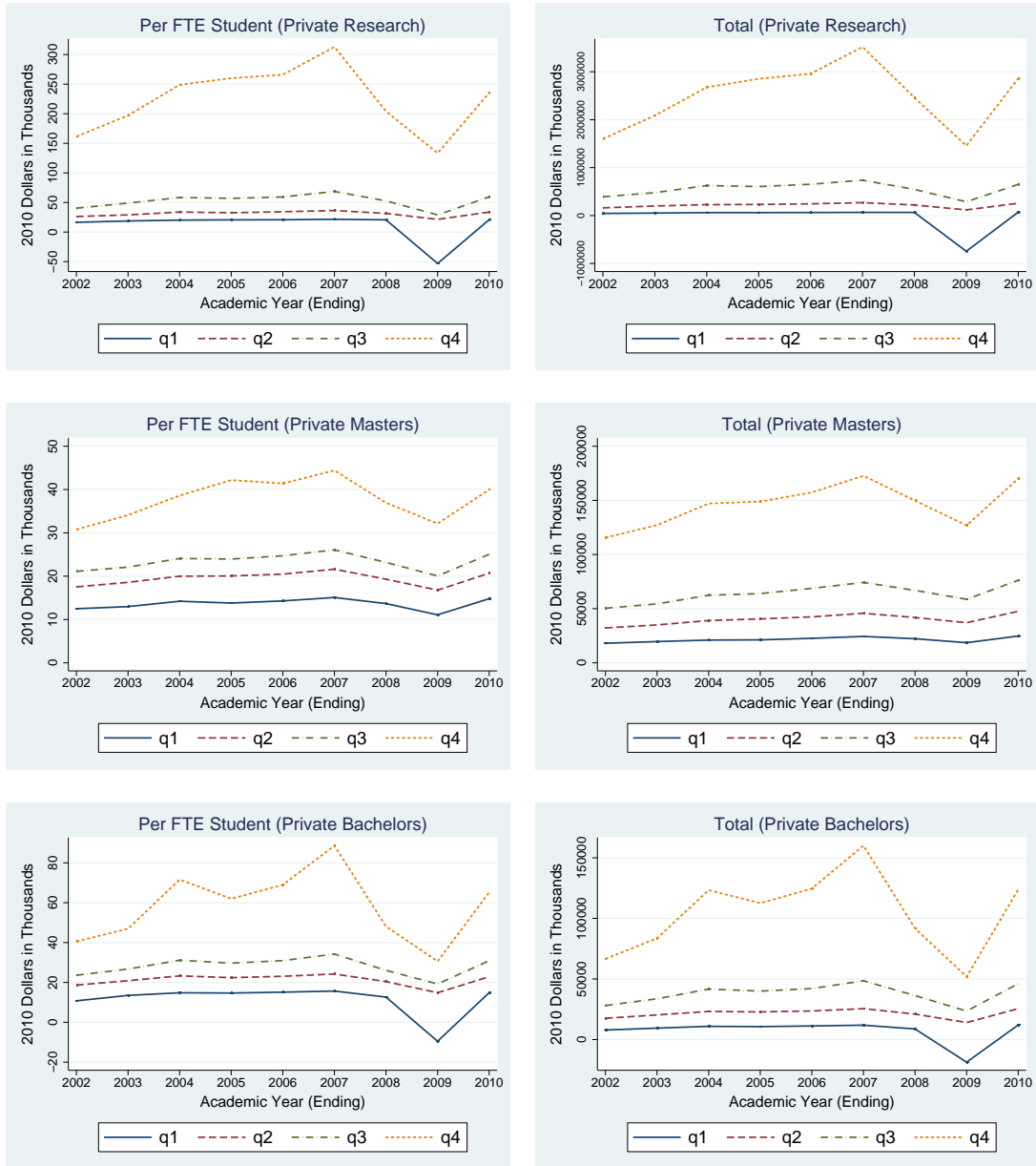
†Department of Economics, Princeton University, Princeton, New Jersey 08544. [Email: hsr@princeton.edu]

Figure A1: Income by Quartile for Public Carnegie Classifications



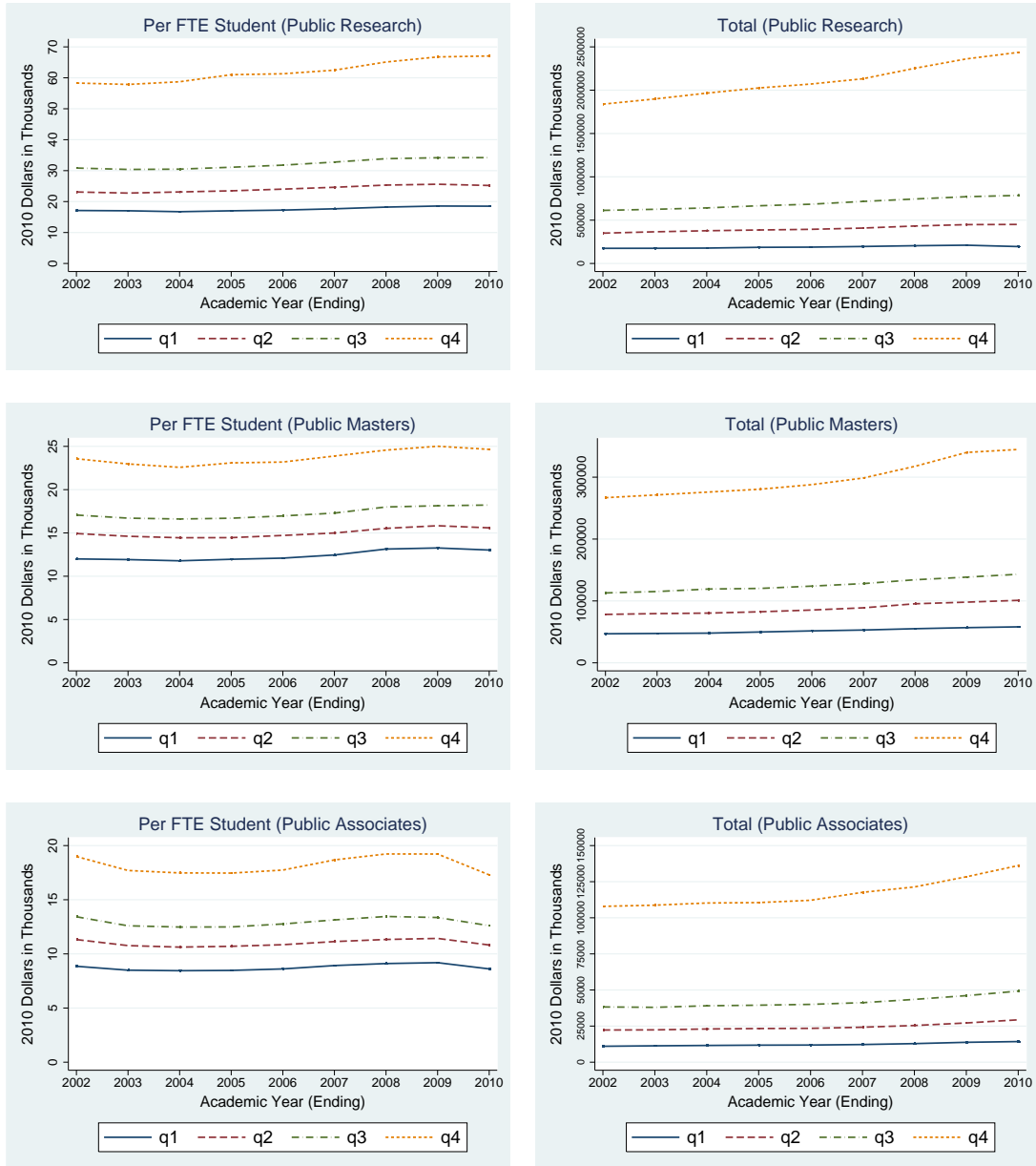
Note: Income is defined as the sum of tuition, government grants, private gifts and investment income, and other sources. See the text for details. All dollar amounts are expressed in 2010 dollars; the CPI for Urban Consumers is used to account for changes in the price level.

Figure A2: Income by Quartile for Private Carnegie Classifications



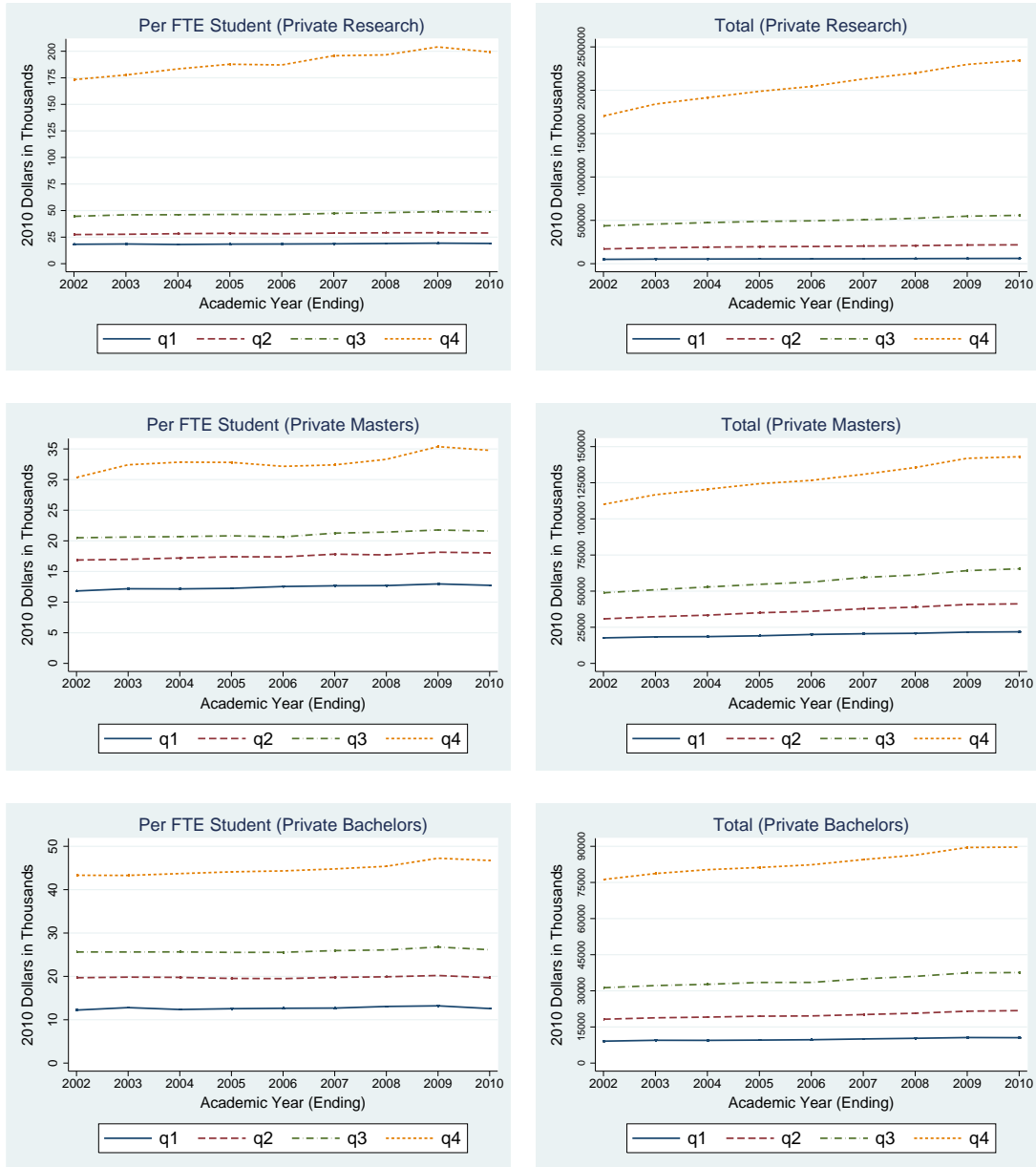
Note: Income is defined as the sum of tuition, government grants, private gifts and investment income, and other sources. See the text for details. All dollar amounts are expressed in 2010 dollars; the CPI for Urban Consumers is used to account for changes in the price level.

Figure A3: Expenditure by Quartile for Public Carnegie Classifications



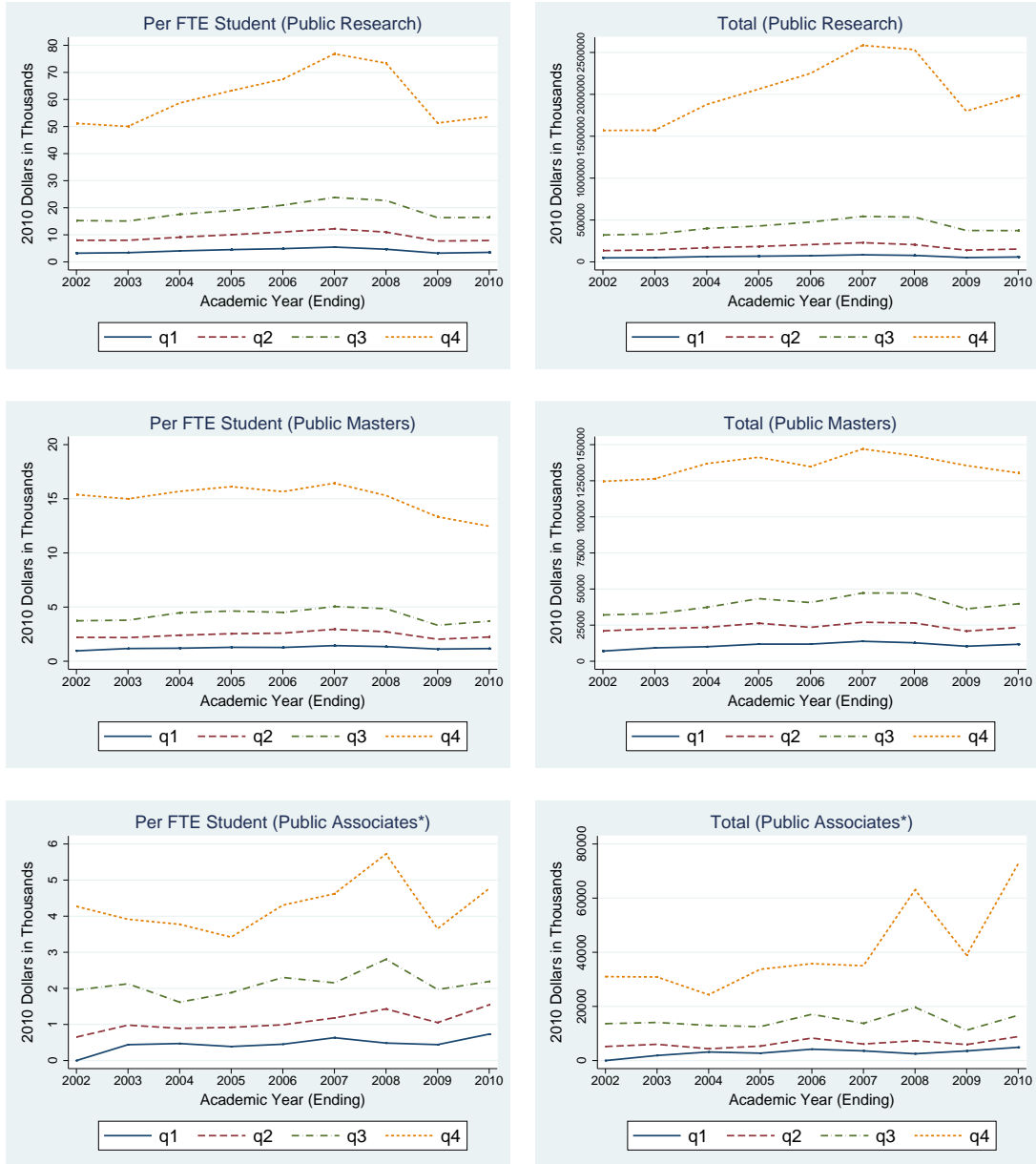
Note: Expenditures are the sum of spending on instruction, research, academic support, student services, and other items. Further details are provided in the text. All dollar amounts are expressed in 2010 dollars; the CPI for Urban Consumers is used to account for changes in the price level.

Figure A4: Expenditure by Quartile for Private Carnegie Classifications



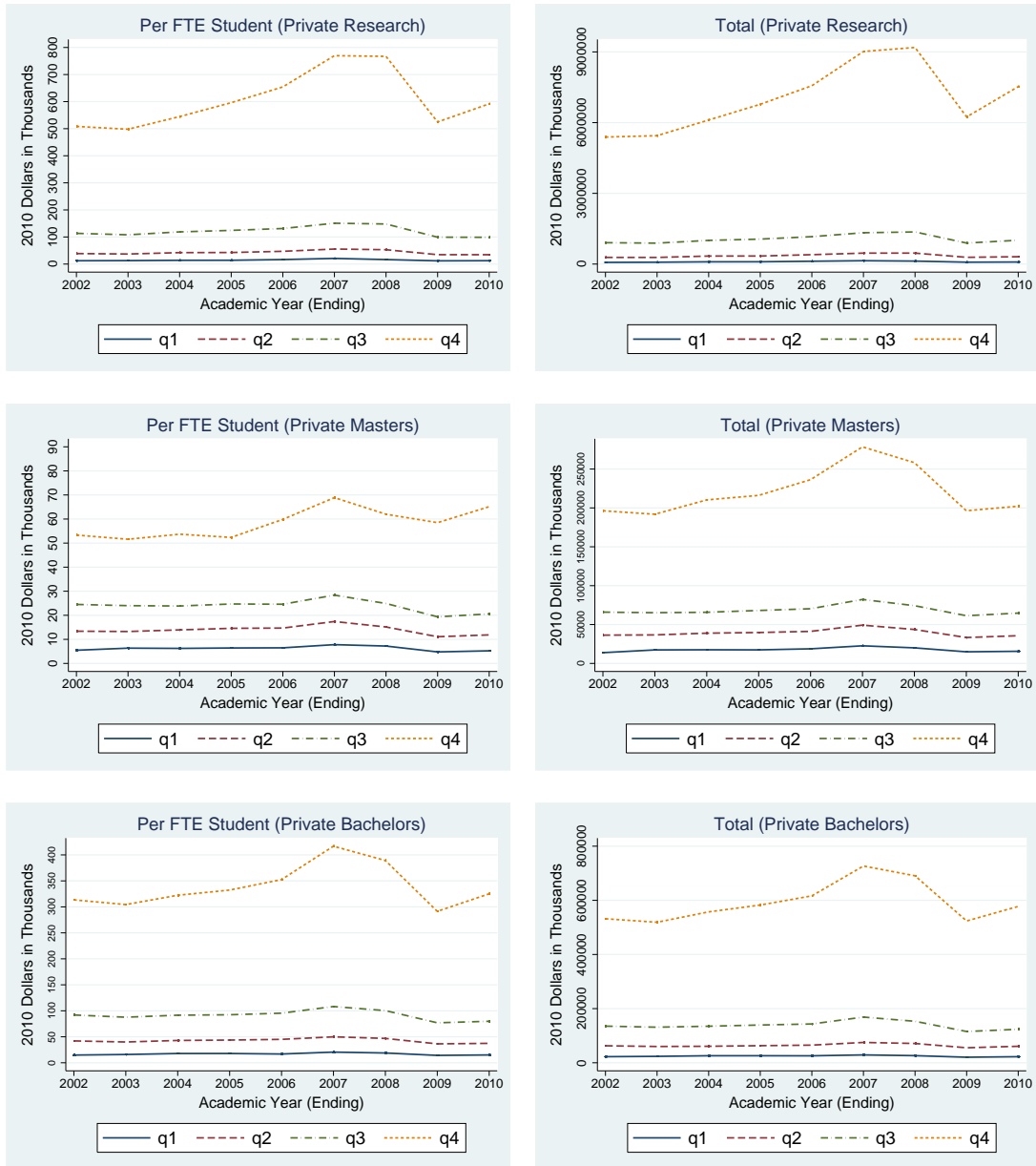
Note: Expenditures are the sum of spending on instruction, research, academic support, student services, and other items. Further details are provided in the text. All dollar amounts are expressed in 2010 dollars; the CPI for Urban Consumers is used to account for changes in the price level.

Figure A5: Endowment by Quartile for Public Carnegie Classifications



Note: *The quartiles for public associates institutions are imprecise because of low sample size. Each year, only around 16 institutions participated in the NACUBO endowment survey, from which the endowment data is obtained. All dollar amounts are expressed in 2010 dollars; the CPI for Urban Consumers is used to account for changes in the price level.

Figure A6: Endowment by Quartile for Private Carnegie Classifications



Note: All dollar amounts are expressed in 2010 dollars; the CPI for Urban Consumers is used to account for changes in the price level.

Figure A7: Income Gini Coefficients for Public Carnegie Classifications

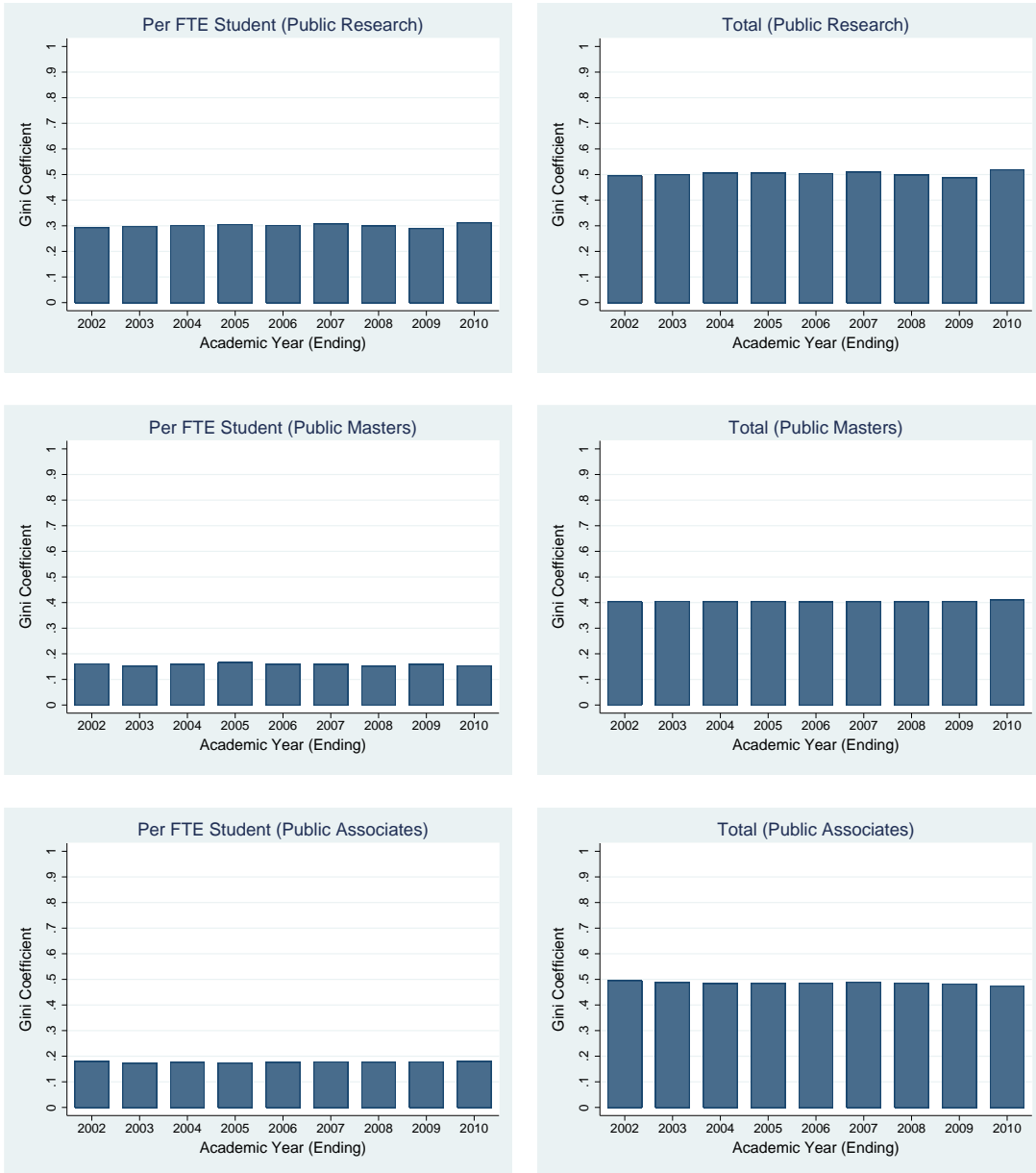


Figure A8: Income Gini Coefficients for Private Carnegie Classifications



Note: The Gini coefficients among private research and private bachelors institutions for 2009 experienced significant increases because of negative incomes. Gini coefficients can exceed one when some observations have negative incomes. In the graphs, we have capped Gini coefficient values at 1.

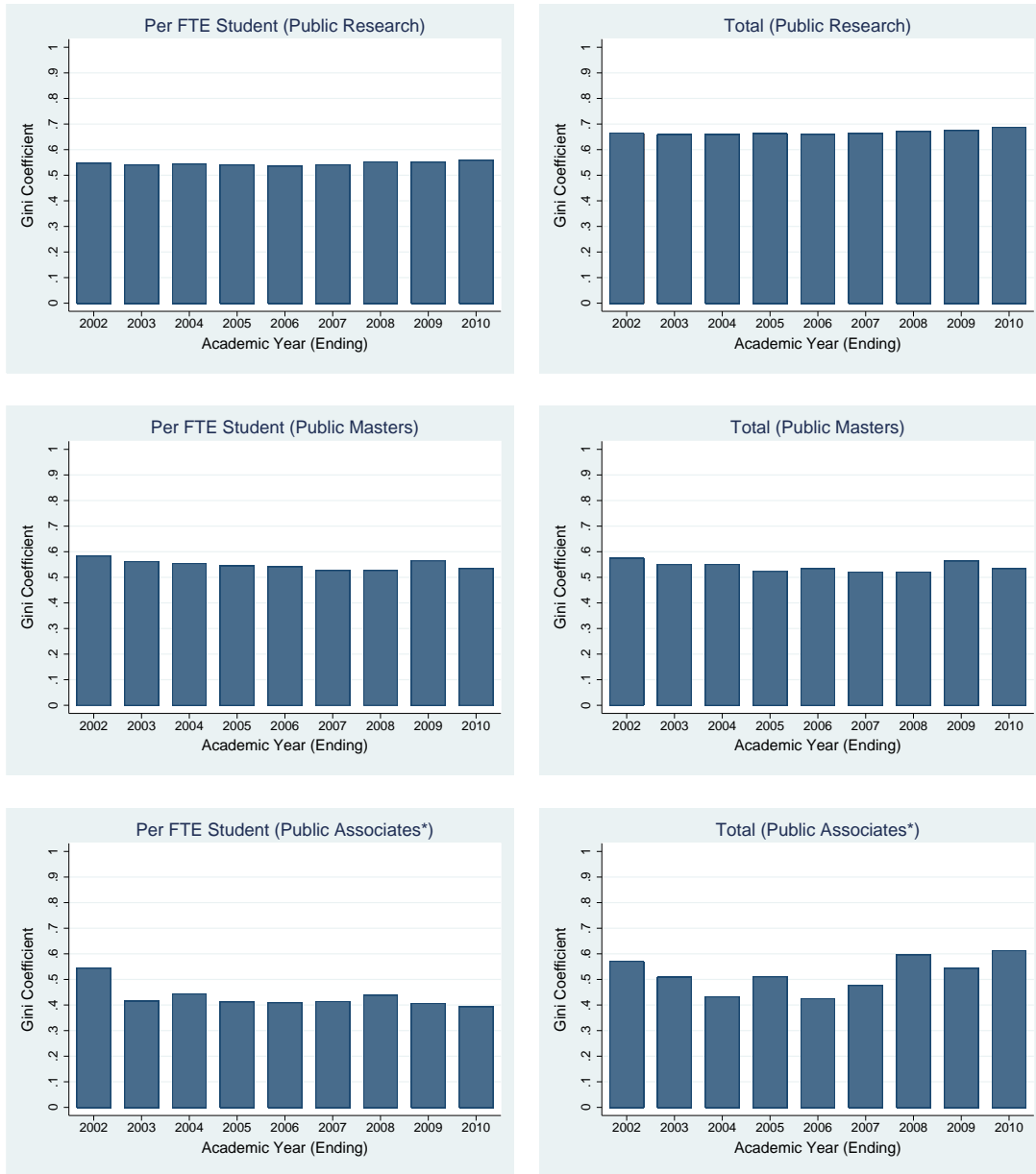
Figure A9: Expenditure Gini Coefficients for Public Carnegie Classifications



Figure A10: Expenditure Gini Coefficients for Private Carnegie Classifications



Figure A11: Endowment Gini Coefficients for Public Carnegie Classifications



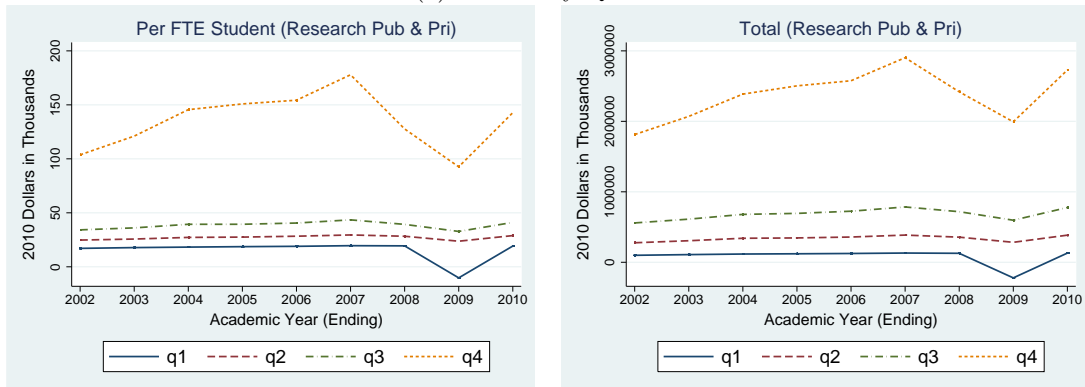
Note: *The Gini coefficients for public associates institutions are imprecise because of low sample size. Each year, only around 16 institutions participated in the NACUBO endowment survey, from which the endowment data is obtained.

Figure A12: Endowment Gini Coefficients for Private Carnegie Classifications

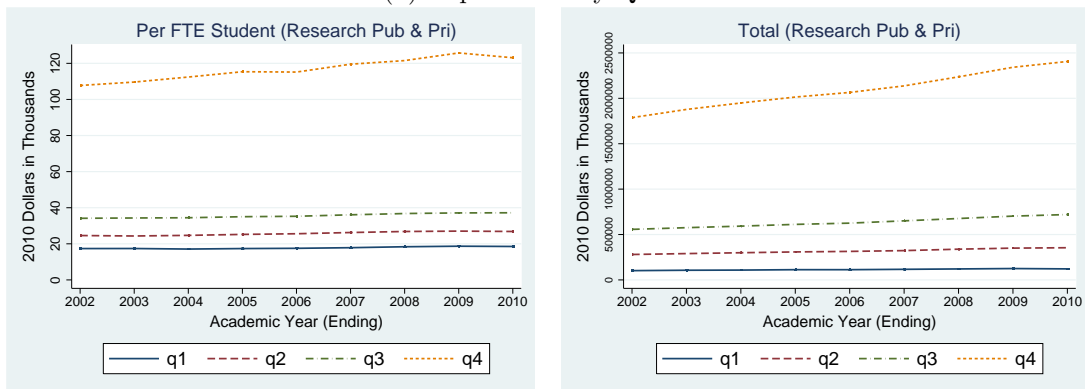


Figure A13: Income, Expenditure and Endowment by Quartile among Research Universities

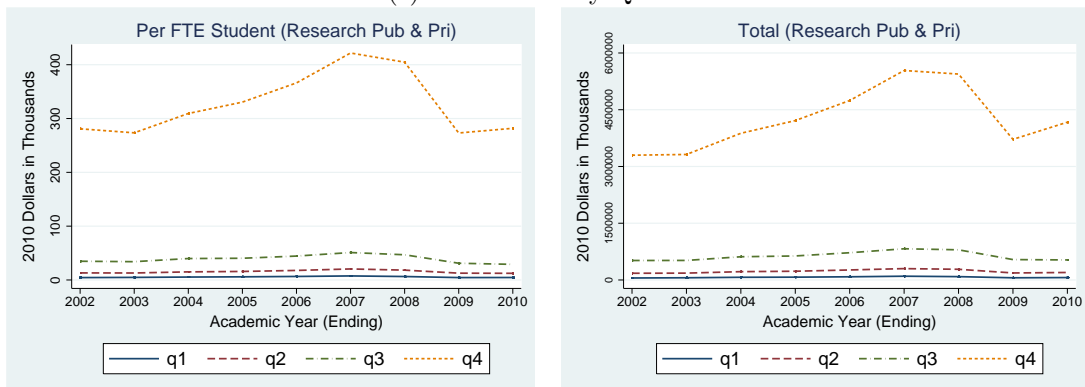
(a) Income by Quartile



(b) Expenditure by Quartile



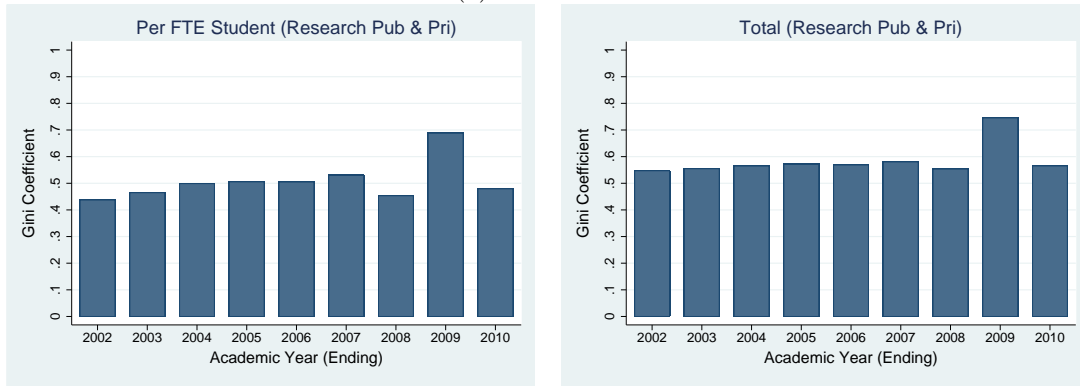
(c) Endowment by Quartile



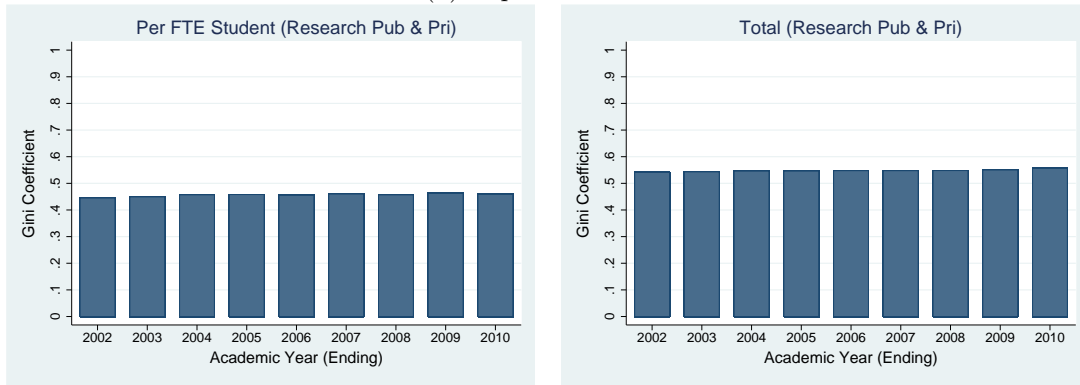
Note: Averages for research universities both public and private as defined by Carnegie Classification. All dollar amounts are expressed in 2010 dollars; the CPI for Urban Consumers is used to account for changes in the price level.

Figure A14: Income, Expenditure and Endowment Gini Coefficients among Research Universities

(a) Income Gini



(b) Expenditure Gini



(c) Endowment Gini

