

A Electronic appendix for *Helliwell, Barrington-Leigh, Harris and Huang*, “International Evidence on the Social Context of Well-Being”

Table 5: **Inter-regional differences in coefficients.** Interaction terms between region dummies and individual variables are included in order to identify differences in coefficients, using region 1 as a baseline. Regions: 1: Former Soviet Union Countries and Eastern European Countries; 2: European Countries; 3: United States, Canada, Australia, New Zealand; 4: Latin America and Caribbean; 5: Asia; 6: Africa; 7: Persian and Mid-east, including Israel.

Significance: 1% 5% 10%

	ladder (all) (1)	ladder (w/SWL) (2)	SWL (3)
log(household income)	.42	.39	.50
	(.059)	(.067)	(.066)
male	-.13	-.15	-.11
	(.017)	(.022)	(.023)
age	-.028	-.023	-.027
	(.004)	(.005)	(.004)
(age/10) ²	.022	.017	.026
	(.004)	(.005)	(.005)
(as) married	.011	.053	.097
	(.031)	(.051)	(.055)
separated, divorced, or widowed	-.15	-.12	-.16
	(.040)	(.063)	(.080)
not enough money: food(net)	-.77	-.96	-.77
	(.059)	(.098)	(.093)
friends to count on	.57	.47	.50
	(.047)	(.060)	(.073)
freedom to choose	.48	.48	.61
	(.054)	(.060)	(.084)
perception of corruption	-.30	-.17	-.25
	(.090)	(.15)	(.12)
log(GDP per cap.,PPP,2003/5)	.045	.12	-.035
	(.052)	(.060)	(.11)
<i>nation</i> : not enough money: food(net)	-1.26	-.84	-1.75
	(.34)	(.42)	(.41)
<i>nation</i> : friends to count on	.72	.60	.065
	(.46)	(.64)	(.63)
<i>nation</i> : freedom to choose	.75	.56	1.57
	(.35)	(.57)	(.52)
<i>nation</i> : perception of corruption	-.49	-.77	-.37
	(.36)	(.46)	(.46)

Continued on next page

	ladder (all) (1)	ladder (w/SWL) (2)	SWL (3)
wave 2	.24 (.064)	-.015 (.16)	.35 (.16)
wave 3	.21 (.052)	(0)	(0)
log(household income)-reg2	.065 (.081)	-.044 (.089)	-.18 (.10)
log(household income)-reg3	.004 (.076)	-.076 (.068)	-.35 (.061)
log(household income)-reg4	.13 (.087)	.24 (.087)	-.056 (.090)
log(household income)-reg5	.042 (.067)	.032 (.080)	.002 (.070)
log(household income)-reg6	-.11 (.063)	-.13 (.074)	.018 (.093)
log(household income)-reg7	.50 (.14)	.39 (.097)	-.083 (.26)
not enough money: food(net)-reg2	-.0008 (.11)	.13 (.15)	-.11 (.12)
not enough money: food(net)-reg3	-.15 (.091)	-.23 (.14)	-.24 (.11)
not enough money: food(net)-reg4	.046 (.086)	.27 (.13)	.14 (.12)
not enough money: food(net)-reg5	.14 (.095)	.25 (.13)	.34 (.14)
not enough money: food(net)-reg6	.34 (.069)	.48 (.11)	-.085 (.11)
not enough money: food(net)-reg7	.15 (.12)	.31 (.15)	-.080 (.15)
friends to count on-reg2	.22 (.075)	.15 (.099)	.16 (.11)
friends to count on-reg3	.28 (.12)	.44 (.12)	.68 (.18)
friends to count on-reg4	.18 (.086)	.33 (.10)	.20 (.12)
friends to count on-reg5	-.34 (.074)	-.30 (.088)	-.14 (.100)
friends to count on-reg6	-.15 (.069)	.014 (.099)	-.16 (.11)
friends to count on-reg7	.095 (.13)	.42 (.096)	.35 (.19)

Continued on next page

	ladder (all) (1)	ladder (w/SWL) (2)	SWL (3)
freedom to choose-reg2	.14 (.11)	.20 (.11)	.21 (.15)
freedom to choose-reg3	.26 (.14)	.42 (.18)	.12 (.086)
freedom to choose-reg4	-.15 (.079)	-.095 (.096)	.074 (.12)
freedom to choose-reg5	-.24 (.082)	-.20 (.083)	-.34 (.14)
freedom to choose-reg6	-.21 (.071)	-.20 (.088)	-.29 (.12)
freedom to choose-reg7	.034 (.12)	.14 (.15)	-.11 (.17)
perception of corruption-reg2	-.17 (.14)	-.12 (.17)	-.045 (.15)
perception of corruption-reg3	.067 (.11)	-.040 (.15)	.22 (.12)
perception of corruption-reg4	.12 (.12)	.13 (.19)	.34 (.17)
perception of corruption-reg5	.21 (.13)	-.18 (.17)	-.17 (.16)
perception of corruption-reg6	.064 (.10)	-.040 (.16)	-.33 (.15)
perception of corruption-reg7	-.16 (.24)	-.23 (.23)	.18 (.32)
dRegion2	.38 (.21)	.30 (.32)	.017 (.30)
dRegion3	.20 (.32)	-.31 (.41)	-.43 (.35)
dRegion4	.72 (.22)	.70 (.35)	.53 (.39)
dRegion5	.36 (.24)	.77 (.41)	.37 (.40)
dRegion6	.009 (.22)	-.12 (.31)	.40 (.43)
dRegion7	.85 (.30)	.41 (.29)	-1.00 (.58)
constant	5.51 (.51)	6.15 (.62)	5.73 (.72)
obs.	162343	57215	57215
N _{clusters}	126	84	84
R ² (adj)	.301	.333	.392

Table 6: National samples with full set of social context variables. The same model is used as in Table 1 but without country-level variables. Shaded rows show the means of coefficients from country-level equations for “ladder” in each region, using the inverse square of coefficient standard errors as a weight. Regression method: weighted OLS.

Significance: 1% 5% 10% Regression method: weighted OLS Dependent variable: lifeToday; Sample: all Regression carried out on Mon Jan 5 23:01:24 2009

	male	age	(age/10) ²	(as) married	separated, divorced, or widowed	not enough money: food(net)	friends to count on	freedom to choose	perception of corruption	donated time	donatedMoney	helped a stranger	importance of religion	attended church/etc	constant	obs	R ² (adj)	
(5)	Montenegro .099	.98	.033	-.046	-.070	.52	.031	.61	.53	-.71	.64	1.94	.57	-.058	-.21	3.46	316.200	
	(.24)	(.31)	(.072)	(.080)	(.43)	(.58)	(.38)	(.57)	(.31)	(.40)	(.66)	(.39)	(.37)	(.31)	(.39)	(1.82)		
(6)	Uzbekistan .33	-.16	-.070	.076	.32	.14	-.91	.098	.78	-.34	.12	-.28	.12	.11	.17	6.75	486.113	
	(.090)	(.19)	(.035)	(.037)	(.31)	(.43)	(.19)	(.29)	(.21)	(.19)	(.19)	(.26)	(.19)	(.20)	(.25)	(.69)		
(7)	Armenia .49	-.032	-.009	-.2e-05	-.53	-.84	-.54	.43	.20	-.081	.055	-.40	.29	-.042	-.16	6.40	661.157	
	(.094)	(.17)	(.028)	(.028)	(.24)	(.32)	(.18)	(.17)	(.16)	(.32)	(.20)	(.30)	(.16)	(.19)	(.17)	(.64)		
(8)	Slovenia 1.07	-.046	-.12	.11	.12	-.030	-.93	.67	.50	-.66	.053	.45	-.20	-.039	-.071	8.72	618.273	
	(.14)	(.17)	(.030)	(.031)	(.26)	(.38)	(.41)	(.42)	(.34)	(.22)	(.18)	(.17)	(.17)	(.23)	(.23)	(.87)		
(9)	Albania .75	-.17	-.034	.025	.14	.15	-.79	.81	.42	-.76	-.094	-.030	.14	-.35	.16	7.00	501.262	
	(.13)	(.16)	(.028)	(.029)	(.24)	(.41)	(.22)	(.23)	(.18)	(.29)	(.24)	(.21)	(.19)	(.22)	(.24)	(.71)		
(10)	Slovakia .99	.028	-.11	.086	.67	.74	-.86	-.036	.59	.53	-.041	.083	.25	-.28	.089	7.77	623.266	
	(.16)	(.15)	(.027)	(.028)	(.21)	(.30)	(.27)	(.30)	(.14)	(.39)	(.22)	(.15)	(.15)	(.19)	(.18)	(.77)		
(11)	Latvia .63	-.10	-.089	.080	.20	.022	-.67	.12	.16	-.44	.29	.27	.20	.067	-.029	7.65	1311.218	
	(.081)	(.087)	(.017)	(.018)	(.12)	(.15)	(.13)	(.14)	(.095)	(.23)	(.12)	(.12)	(.11)	(.11)	(.13)	(.44)		
(12)	Serbia .82	-.069	-.053	.056	-.45	-.71	-.40	.74	.64	-.37	.32	-.084	.35	-.11	-.022	7.12	910.235	
	(.11)	(.15)	(.033)	(.033)	(.25)	(.34)	(.24)	(.24)	(.15)	(.24)	(.41)	(.24)	(.22)	(.16)	(.17)	(.76)		
(13)	Hungary 1.07	.16	-.13	.13												7.79	444.286	
	(.14)	(.19)	(.032)	(.032)												(.81)		
(15)	Romania .78	-.17	.031	-.040	-.65	-.66	-.1.21	.56	.068	-.54	.61	.36	.25	-.21	-.056	7.03	533.341	
	(.12)	(.16)	(.030)	(.030)	(.26)	(.35)	(.17)	(.17)	(.16)	(.29)	(.29)	(.25)	(.18)	(.21)	(.17)	(.71)		
(16)	Estonia .69	-.081	-.056	.046	-.077	.088	-.64	.48	.38	-.21	.35	-.012	.10	-.030	.006	7.00	984.183	
	(.095)	(.11)	(.021)	(.022)	(.17)	(.21)	(.15)	(.21)	(.13)	(.14)	(.13)	(.16)	(.11)	(.17)	(.20)	(.49)		
(17)	Tajikistan .33	.20	-.031	.025	.49	.11	-.81	.18	.48	.19	.45	-.19	-.24	-.14	.10	5.51	376.172	
	(.085)	(.16)	(.041)	(.046)	(.28)	(.33)	(.18)	(.19)	(.17)	(.23)	(.19)	(.33)	(.17)	(.21)	(.20)	(.85)		
(18)	Lithuania .91	-.19	-.066	.059	-.27	-.18	-.1.37	.006	.49	-.48	.25	.36	.16	-.007	.35	8.23	743.211	
	(.10)	(.14)	(.024)	(.026)	(.19)	(.22)	(.26)	(.32)	(.14)	(.27)	(.23)	(.22)	(.14)	(.16)	(.18)	(.62)		
(19)	Ukraine .39	.073	.027	-.051	-.35	-.46	-.33	.65	.28	-.87	-.23	.096	.14	-.014	.11	5.99	1146.154	
	(.12)	(.14)	(.025)	(.025)	(.24)	(.31)	(.15)	(.22)	(.15)	(.32)	(.16)	(.27)	(.16)	(.17)	(.19)	(.66)		

	log(household income)	male	age	age/10 ²	(as) married	separated, divorced, or widowed	not enough money: food(net)	friends to count on	freedom to choose	perception of corruption	donated time	donatedMoney	helped a stranger	importance of religion	attended church/etc	constant	obs.	R ² (adj)
(20)	Russian Federation .64 (.062)	-.040 (.093)	-.054 (.016)	.042 (.017)	-.037 (.14)	.031 (.18)	-.83 (.11)	.36 (.17)	.35 (.098)	-.70 (.22)	-.16 (.12)	.20 (.24)	.13 (.11)	.29 (.11)	-.026 (.16)	7.51 (.42)	2150.176	
(21)	Republic of Moldova .40 (.072)	-.009 (.12)	-.017 (.023)	.016 (.024)	-.26 (.20)	-.31 (.26)	-.67 (.13)	.29 (.17)	.38 (.12)	.006 (.23)	-.11 (.16)	.042 (.18)	.29 (.14)	.25 (.14)	-.22 (.14)	6.36 (.56)	1139.109	
(22)	Croatia .69 (.12)	-.17 (.18)	-.085 (.030)	.068 (.029)	.005 (.26)	-.28 (.37)	-.69 (.26)	.81 (.26)	.24 (.18)	-.77 (.36)	-.26 (.30)	.19 (.20)	-.11 (.21)	-.35 (.22)	.28 (.20)	8.94 (.75)	597.177	
(24)	Georgia .53 (.067)	-.067 (.12)	-.026 (.019)	.023 (.019)	-.070 (.17)	-.35 (.21)	-1.14 (.12)	.34 (.13)	.68 (.12)	-.29 (.13)	.43 (.16)	.18 (.28)	-.15 (.12)	.057 (.13)	.044 (.13)	5.87 (.47)	1077.273	
(27)	Bosnia and Herzegovina .66 (.10)	.074 (.15)	-.11 (.026)	.096 (.027)	.16 (.22)	.19 (.32)	-.92 (.25)	.54 (.17)	.61 (.15)	-.23 (.29)	-.77 (.41)	.38 (.15)	.12 (.16)	.11 (.17)	.13 (.15)	8.30 (.63)	1205.204	
(28)	Bulgaria .70 (.13)	-.16 (.18)	-.040 (.031)	.035 (.031)	-.56 (.29)	-.53 (.34)	-.49 (.20)	-.054 (.25)	.48 (.17)	.67 (.60)	-.094 (.67)	.27 (.21)	.12 (.19)	.38 (.18)	-.43 (.22)	5.57 (.89)	493.195	
(29)	Poland .67 (.18)	-.58 (.24)	.005 (.038)	-.008 (.039)	-.78 (.34)	-.63 (.50)	-.65 (.28)	.78 (.33)	-.14 (.26)	.34 (.47)	-.078 (.37)	.26 (.28)	-.20 (.26)	-.16 (.32)	.41 (.26)	6.32 (.88)	347.109	
(30)	Kyrgyzstan .32 (.059)	-.065 (.11)	-.036 (.019)	.028 (.021)	.23 (.18)	.041 (.23)	-.79 (.11)	.36 (.12)	.27 (.11)	-.18 (.18)	.19 (.12)	.21 (.16)	.12 (.13)	-.30 (.12)	.082 (.16)	6.30 (.45)	1364.127	
(5-30)	FSU and E Europe .57 (.021)	-.052 (.030)	-.052 (.005)	.042 (.006)	-.029 (.046)	-.11 (.059)	-.78 (.037)	.40 (.043)	.39 (.031)	-.31 (.051)	.12 (.041)	.19 (.043)	.11 (.033)	-.005 (.035)	.030 (.039)	7.00 (.13)	18024	
(31)	Kosovo .16 (.14)	-.096 (.15)	.015 (.036)	-.029 (.042)	-.41 (.26)	-1.30 (.43)	-.33 (.22)	.74 (.23)	.28 (.18)	-.20 (.24)	-.23 (.21)	.81 (.17)	.078 (.18)	.12 (.18)	-.61 (.20)	4.88 (.84)	649.162	
(32)	Ireland .31 (.090)	-.042 (.13)	-.053 (.021)	.053 (.023)	.26 (.16)	-.43 (.43)	-1.07 (.52)	.037 (.44)	.84 (.17)	-.037 (.15)	.033 (.14)	.23 (.16)	-.066 (.12)	.25 (.14)	-.22 (.14)	7.29 (.67)	1095.101	
(34)	Cyprus .78 (.15)	-.028 (.18)	-.064 (.032)	.057 (.028)	.40 (.28)	.31 (.41)	-1.55 (.52)	.68 (.34)	.16 (.23)	-.40 (.21)	.37 (.22)	.20 (.19)	.20 (.19)	.33 (.22)	.29 (.20)	6.88 (.79)	511.150	
(36)	Denmark .24 (.15)	.008 (.12)	-.017 (.022)	.014 (.023)	.44 (.20)	-.15 (.25)	-1.66 (1.03)	.21 (.27)	.59 (.33)	-.15 (.17)	.16 (.16)	.39 (.14)	.11 (.12)	.12 (.20)	.27 (.18)	6.94 (.62)	663.092	
(37)	Sweden .16 (.054)	-.13 (.10)	.011 (.018)	-.011 (.017)	.41 (.13)	.061 (.19)	-1.01 (.24)	.44 (.20)	1.37 (.22)	-.17 (.14)	.071 (.14)	.053 (.10)	.11 (.10)	-.054 (.16)	.056 (.15)	5.31 (.53)	1174.154	
(38)	Switzerland .55 (.12)	-.084 (.13)	-.048 (.023)	.062 (.024)	-.019 (.17)	-.35 (.25)	-.95 (.28)	.48 (.35)	1.03 (.24)	-.27 (.15)	.18 (.13)	.14 (.16)	.20 (.14)	-.069 (.16)	-.064 (.16)	6.94 (.63)	630.182	
(39)	Turkey .55 (.098)	-.51 (.14)	-.063 (.026)	.075 (.028)	.11 (.17)	-.76 (.38)	-.74 (.15)	.79 (.16)	.41 (.14)	-1.01 (.17)	.67 (.24)	-.11 (.19)	-.11 (.14)	-.14 (.17)	.038 (.15)	8.01 (.58)	1183.179	
(41)	Macedonia .73 (.13)	-.11 (.16)	-.12 (.030)	.10 (.031)	.049 (.27)	-.32 (.42)	-.14 (.25)	.87 (.21)	.15 (.16)	.10 (.28)	.14 (.31)	-.11 (.17)	.16 (.17)	.011 (.20)	.018 (.17)	8.00 (.70)	779.173	
(43)	Finland .40 (.13)	-.19 (.16)	-.012 (.030)	.008 (.031)	.14 (.27)	-.075 (.42)	-.57 (.25)	.70 (.21)	.79 (.16)	-.25 (.15)	.16 (.13)	.14 (.16)	.052 (.14)	.044 (.16)	-.10 (.16)	6.70 (.63)	1315.138	

Continued on next page

	log(household income)	male	age	age/10 ²	(as) married	separated, divorced, or widowed	not enough money: food(net)	friends to count on	freedom to choose	perception of corruption	donated time	donatedMoney	helped a stranger	importance of religion	attended church/etc	constant	obs.	R ² (adj)
(44)	Portugal .65 (.088) (.076) (-.20 - .11 .086 (.12) (.17) (.027) (.25)	-.20 (.17)	-.11 (.027)	.086 (.017)	.15 (.13)	.009 (.16)	-1.27 (.22)	.64 (.28)	.32 (.27)	-.84 (.14)	.20 (.084)	.34 (.073)	.023 (.086)	-.092 (.092)	.041 (.12)	8.46 (.62)	941.207	
(45)	Norway .20 (.057) (.10) (.019) (.019)	-.18 (.10)	-.018 (.019)	.021 (.019)	.46 (.16)	-.12 (.20)	-1.06 (.38)	1.01 (.23)	.90 (.32)	-.29 (.12)	.14 (.095)	.16 (.10)	.089 (.10)	.098 (.14)	.055 (.15)	5.66 (.55)	1346.148	
(46)	France .44 (.13) (.12) (.020) (.021)	-.29 (.12)	-.048 (.020)	.031 (.021)	.59 (.15)	.34 (.28)	-1.25 (.28)	.36 (.41)	.48 (.15)	-.035 (.15)	.020 (.14)	.11 (.14)	-.002 (.14)	.18 (.16)	.23 (.16)	7.24 (.69)	851.175	
(47)	United Kingdom .17 (.071) (.13) (.024) (.024)	-.19 (.13)	-.005 (.024)	.006 (.024)	.31 (.19)	-.47 (.24)	-.57 (.21)	.89 (.47)	.78 (.18)	-.29 (.14)	.13 (.15)	.56 (.16)	.16 (.13)	.020 (.17)	.010 (.19)	5.16 (.68)	770.167	
(48)	Netherlands .24 (.12) (.097) (.017) (.016)	.049 (.097)	-.030 (.017)	.024 (.016)	.45 (.18)	.072 (.27)	-.49 (.37)	.28 (.46)	.42 (.17)	-.27 (.11)	.011 (.083)	-.021 (.12)	.019 (.092)	.017 (.11)	.24 (.11)	7.41 (.61)	1077.106	
(49)	Germany 1.04 (.21) (.24) (.046) (.047)	-.56 (.24)	-.068 (.046)	.060 (.047)	-.022 (.37)	-.0007 (.44)	-1.25 (.57)	.72 (.57)	.49 (.29)	-.77 (.36)	.27 (.26)	.10 (.28)	-.22 (.25)	.079 (.27)	-.10 (.27)	8.30 (1.24)	255.207	
(50)	Spain .40 (.10) (.17) (.030) (.031)	-.039 (.17)	-.10 (.030)	.097 (.031)	.70 (.27)	.11 (.39)	-1.07 (.36)	.20 (.41)	.15 (.21)	-.53 (.20)	.37 (.20)	-.12 (.17)	.16 (.15)	-.32 (.21)	.24 (.21)	9.53 (.77)	620.123	
(51)	Belgium .075 (.15) (.19) (.033) (.031)	-.23 (.19)	.003 (.033)	-.002 (.30)	-.001 (.30)	-.26 (.44)	-.82 (.30)	.82 (.39)	.60 (.26)	-.28 (.20)	.042 (.18)	.16 (.17)	.099 (.19)	-.17 (.17)	-.017 (.21)	6.03 (.83)	348.075	
(52)	Italy .59 (.16) (.17) (.031) (.031)	-.010 (.17)	-.005 (.031)	-.002 (.28)	-.053 (.28)	-.62 (.38)	-.77 (.29)	1.20 (.37)	.66 (.17)	-.26 (.41)	.20 (.20)	.051 (.19)	.21 (.18)	.23 (.21)	-.068 (.17)	6.09 (.89)	739.164	
(53)	Austria .50 (.11) (.13) (.025) (.024)	-.35 (.13)	-.071 (.025)	.068 (.024)	.41 (.19)	-.16 (.27)	.29 (.35)	.57 (.28)	.34 (.23)	-.29 (.15)	.072 (.13)	.23 (.15)	.005 (.13)	-.14 (.15)	.25 (.15)	8.13 (.61)	914.110	
<31-53> Countries	European .33 (.023) (.029) (.005) (.005)	-.15 (.029)	-.036 (.005)	.031 (.044)	.28 (.044)	-.15 (.064)	-.73 (.064)	.66 (.065)	.52 (.045)	-.29 (.038)	.12 (.033)	.16 (.032)	.067 (.030)	.027 (.036)	.043 (.037)	6.94 (.15)	15860	
(54)	New Zealand .44 (.11) (.12) (.021) (.022)	-.45 (.12)	-.059 (.021)	.063 (.022)	.13 (.19)	-.22 (.28)	-.53 (.22)	.40 (.35)	.70 (.27)	-.35 (.17)	.43 (.13)	.17 (.14)	-.14 (.13)	-.007 (.17)	-.16 (.19)	7.90 (.65)	1213.125	
(55)	Canada .38 (.081) (.088) (.016) (.017)	-.33 (.088)	-.075 (.016)	.080 (.017)	.36 (.13)	-.26 (.18)	-.95 (.29)	.84 (.24)	.37 (.24)	-.020 (.11)	.24 (.095)	.13 (.11)	-.021 (.095)	-.097 (.11)	.12 (.13)	7.74 (.49)	1828.164	
(56)	United States of America .46 (.083) (.14) (.019) (.019)	-.17 (.14)	-.089 (.019)	.088 (.019)	.62 (.18)	-.014 (.27)	-1.16 (.33)	.65 (.30)	.40 (.23)	-.15 (.14)	.039 (.13)	.28 (.15)	.049 (.13)	.10 (.17)	.018 (.16)	7.89 (.61)	811.190	
(57)	Australia .49 (.11) (.12) (.032) (.036)	-.24 (.12)	-.019 (.032)	.035 (.036)	-.18 (.16)	-.71 (.28)	-1.01 (.25)	.95 (.27)	1.08 (.22)	-.20 (.15)	-.18 (.12)	.33 (.13)	.024 (.12)	.011 (.15)	.33 (.16)	5.80 (.77)	836.253	
<54-57> Aus., and NZ	USA, Canada, .44 (.046) (.056) (.010) (.011)	-.31 (.056)	-.070 (.010)	.075 (.011)	.24 (.081)	-.29 (.12)	-.85 (.13)	.76 (.14)	.66 (.12)	-.14 (.068)	.14 (.058)	.22 (.064)	-.021 (.057)	-.019 (.071)	.096 (.077)	7.50 (.30)	4688	

Continued on next page

	log(household income)	male	age	age/10 ²	(as) married	separated, divorced, or widowed	not enough money: food(net)	friends to count on	freedom to choose	perception of corruption	donated time	donated Money	helped a stranger	importance of religion	attended church/etc	constant	obs.	R ² (adj)
(58)	Paraguay .44 (.054)	-.031 (.10)	-.062 (.016)	.049 (.016)	-.050 (.13)	.008 (.19)	-.79 (.12)	.41 (.14)	.10 (.10)	-.37 (.18)	.34 (.13)	.034 (.11)	.29 (.11)	.24 (.18)	-.091 (.11)	7.00 (.47)	1983.192	
(59)	Uruguay .47 (.093)	-.055 (.13)	-.079 (.023)	.060 (.022)	.12 (.20)	.20 (.23)	-.74 (.17)	.20 (.20)	.51 (.18)	-.59 (.16)	.14 (.21)	.17 (.17)	.38 (.15)	.30 (.15)	-.31 (.19)	7.92 (.61)	1067.152	
(60)	Ecuador .85 (.057)	-.12 (.099)	-.048 (.017)	.037 (.018)	.12 (.14)	.20 (.21)	-.56 (.11)	.35 (.14)	.031 (.10)	-.48 (.15)	.024 (.14)	.059 (.13)	.24 (.11)	-.20 (.14)	-.073 (.11)	8.13 (.39)	1748.198	
(61)	Dominican Republic .66 (.092)	-.46 (.18)	-.099 (.027)	.097 (.029)	-.27 (.22)	-.42 (.27)	-.95 (.18)	.68 (.25)	.16 (.23)	-.28 (.23)	-.50 (.20)	.32 (.20)	.14 (.18)	.12 (.25)	.27 (.19)	8.26 (.74)	1396.120	
(62)	El Salvador .62 (.061)	-.26 (.10)	-.034 (.016)	.020 (.017)	-.17 (.12)	.018 (.21)	-.66 (.10)	.24 (.14)	.31 (.11)	-.21 (.14)	.21 (.14)	.22 (.13)	-.067 (.10)	.030 (.15)	.11 (.12)	7.97 (.41)	1879.137	
(65)	Honduras .62 (.077)	-.29 (.13)	-.051 (.021)	.040 (.023)	-.13 (.16)	-.058 (.28)	-.69 (.13)	.70 (.18)	.45 (.13)	-.52 (.21)	.10 (.15)	.093 (.14)	-.009 (.13)	-.011 (.21)	.35 (.14)	7.84 (.54)	1771.115	
(66)	Costa Rica .56 (.076)	-.093 (.11)	-.054 (.018)	.040 (.021)	.15 (.14)	.47 (.23)	-.94 (.14)	.90 (.23)	-.086 (.20)	-.27 (.17)	.050 (.15)	.065 (.13)	.14 (.13)	.048 (.16)	.039 (.12)	8.16 (.52)	1349.151	
(68)	Argentina .46 (.086)	-.33 (.13)	-.053 (.021)	.037 (.021)	-.11 (.18)	.082 (.26)	-.69 (.17)	.80 (.21)	.36 (.14)	-.18 (.22)	-.033 (.21)	.21 (.18)	.16 (.14)	-.048 (.16)	.089 (.17)	7.52 (.51)	1322.117	
(69)	Bolivia .54 (.066)	-.24 (.10)	-.045 (.020)	.042 (.023)	-.27 (.14)	-.36 (.26)	-.46 (.12)	.11 (.15)	.090 (.11)	-.097 (.16)	-.016 (.14)	.14 (.14)	.034 (.11)	-.25 (.17)	.19 (.12)	8.17 (.44)	1340.104	
(72)	Nicaragua .79 (.069)	-.34 (.12)	-.083 (.020)	.068 (.023)	-.25 (.14)	-.70 (.26)	-.70 (.12)	.40 (.19)	.66 (.14)	-.16 (.20)	.59 (.15)	.047 (.14)	.15 (.13)	-.30 (.17)	.12 (.13)	8.19 (.55)	2275.169	
(73)	Trinidad and Tobago .62 (.14)	.036 (.21)	-.050 (.033)	.046 (.036)	.12 (.27)	.12 (.36)	-.66 (.23)	1.56 (.29)	.55 (.24)	-.092 (.47)	.12 (.25)	-.39 (.24)	-.56 (.23)	-.019 (.30)	-.11 (.22)	6.00 (.82)	520.211	
(74)	Panama .57 (.058)	.052 (.10)	-.029 (.015)	.015 (.017)	-.057 (.13)	.25 (.22)	-.46 (.12)	.55 (.20)	.26 (.11)	-.31 (.20)	-.027 (.12)	.28 (.11)	-.013 (.10)	.25 (.13)	.041 (.10)	7.29 (.44)	2252.111	
(76)	Guatemala .41 (.085)	.045 (.14)	-.051 (.022)	.041 (.024)	.022 (.18)	-.29 (.31)	-.32 (.17)	.90 (.20)	-.20 (.14)	.081 (.23)	-.12 (.15)	-.010 (.14)	.51 (.14)	.20 (.19)	.11 (.15)	7.13 (.53)	1004.094	
(77)	Guyana .16 (.27)	-.53 (.41)	-.017 (.065)	-.013 (.076)	.044 (.42)	-.092 (.58)	-.024 (.43)	.99 (.41)	.52 (.35)	-.81 (.50)	.16 (.43)	.44 (.41)	-.55 (.45)	.30 (.37)	-.34 (.39)	6.93 (1.72)	132.122	
(78)	Haiti -.11 (.10)	.092 (.21)	.024 (.048)	-.040 (.060)	.48 (.29)	-.47 (.42)	.17 (.24)	-.031 (.23)	-.087 (.21)	-.32 (.41)	-.16 (.23)	-.18 (.23)	-.020 (.22)	.26 (.27)	-.16 (.24)	3.31 (.98)	289.0	
(79)	Peru .60 (.067)	-.069 (.12)	-.070 (.019)	.059 (.020)	-.20 (.15)	-.13 (.25)	-.41 (.12)	.61 (.17)	.33 (.12)	-.34 (.28)	-.014 (.14)	.19 (.14)	.20 (.12)	.37 (.15)	.11 (.11)	7.04 (.49)	2316.151	
(81)	Puerto Rico .32 (.16)	-.50 (.28)	-.020 (.043)	.021 (.042)	-.086 (.40)	.087 (.41)	-.88 (.34)	.54 (.45)	.92 (.32)	-.057 (.55)	.49 (.34)	.59 (.30)	-.11 (.30)	-.31 (.44)	.11 (.30)	6.46 (1.29)	378.075	
(82)	Belize .20 (.29)	-.19 (.34)	-.029 (.064)	.030 (.079)	.64 (.36)	.17 (.74)	-.20 (.37)	1.26 (.61)	.004 (.35)	-.65 (.49)	-.050 (.35)	.29 (.38)	.49 (.32)	-.24 (.31)	.35 (.29)	6.15 (1.48)	185.025	

Continued on next page

	log(household income)	male	age	age/10 ²	(as) married	separated, divorced, or widowed	not enough money: food(net)	friends to count on	freedom to choose	perception of corruption	donated time	donatedMoney	helped a stranger	importance of religion	attended church/etc	constant	obs.	R ² (adj)
(83)	Chile .71 (.068)	-.26 (.11)	-.029 (.020)	.014 (.021)	-.098 (.15)	-.12 (.23)	-.82 (.14)	.68 (.15)	.26 (.12)	-.24 (.14)	.27 (.15)	-.004 (.12)	.004 (.12)	.064 (.13)	.23 (.13)	7.66 (.47)	2328.206	
(84)	Colombia .57 (.070)	-.083 (.11)	-.069 (.018)	.065 (.019)	-.15 (.14)	-.29 (.22)	-.81 (.13)	.89 (.19)	-.013 (.13)	-.023 (.16)	.25 (.14)	.25 (.13)	.079 (.12)	.062 (.17)	-.036 (.12)	7.92 (.48)	2245.122	
(85)	Brazil .34 (.077)	-.16 (.12)	-.059 (.019)	.050 (.021)	.080 (.14)	-.044 (.24)	-.26 (.17)	.60 (.20)	.39 (.15)	-.28 (.14)	.45 (.17)	.32 (.14)	-.19 (.12)	-.10 (.20)	.075 (.13)	7.59 (.50)	1555.066	
(86)	Venezuela .30 (.051)	-.22 (.14)	-.027 (.021)	.026 (.022)	.059 (.17)	-.19 (.24)	-.51 (.17)	.59 (.34)	.52 (.18)	-.38 (.16)	.10 (.20)	-.13 (.19)	.25 (.15)	.090 (.17)	-.022 (.15)	6.67 (.61)	1283.078	
(87)	Mexico .73 (.074)	-.29 (.12)	-.007 (.020)	-.9e-05 (.022)	-.22 (.17)	-.063 (.26)	-.71 (.14)	.43 (.22)	.29 (.13)	.14 (.16)	.092 (.18)	.23 (.15)	.18 (.12)	.11 (.14)	.14 (.13)	7.28 (.50)	1508.173	
(58-87)	Latin America and Caribbean	.55	-.16	-.049	.039	-.059	-.62	.52	.24	-.24	.12	.13	.11	.058	.065	7.55	32125	
(88)	Mongolia .51 (.099)	-.14 (.17)	.053 (.033)	-.051 (.035)	-.25 (.27)	-.57 (.37)	-1.09 (.18)	.10 (.25)	.056 (.17)	.27 (.36)	.21 (.18)	.40 (.17)	.30 (.17)	.022 (.19)	.27 (.31)	4.52 (.80)	507.195	
(89)	Nepal .73 (.088)	-.42 (.10)	.016 (.018)	-.014 (.020)	-.48 (.15)	-.47 (.28)	-.89 (.18)	.058 (.12)	.38 (.10)	-.37 (.24)	.044 (.12)	.055 (.11)	.064 (.10)	-.39 (.22)	.020 (.097)	7.46 (.57)	1547.179	
(90)	Republic of Korea .52 (.12)	-.44 (.17)	-.045 (.039)	.026 (.043)	.42 (.21)	.41 (.61)	-.92 (.31)	.54 (.24)	.36 (.17)	-.27 (.25)	.15 (.20)	.12 (.19)	.22 (.18)	-.15 (.24)	-.062 (.23)	6.69 (.84)	1449.186	
(91)	Taiwan .76 (.098)	-.28 (.12)	-.10 (.023)	.10 (.024)	-.21 (.20)	-.52 (.52)	-.68 (.20)	.59 (.22)	.48 (.13)	-.47 (.21)	.18 (.18)	.36 (.13)	-.074 (.13)	-.046 (.14)	.36 (.16)	8.55 (.56)	1276.217	
(93)	Hong Kong .66 (.10)	.085 (.15)	-.096 (.035)	.10 (.041)	.19 (.26)	.46 (.48)	-.67 (.38)	.34 (.25)	-.13 (.34)	-.13 (.20)	-.085 (.17)	.15 (.15)	.21 (.15)	.14 (.23)	.084 (.22)	7.04 (.77)	575.158	
(94)	Philippines .46 (.086)	-.028 (.13)	-.085 (.023)	.088 (.025)	-.32 (.17)	-.42 (.28)	-.36 (.13)	.44 (.16)	-.18 (.23)	-.056 (.23)	-.17 (.15)	.082 (.15)	.016 (.13)	-.012 (.39)	-.033 (.14)	7.89 (.70)	1493.100	
(95)	Sri Lanka .75 (.10)	-.26 (.11)	-.005 (.021)	.008 (.023)	-.15 (.17)	-.37 (.32)	-.62 (.12)	.60 (.19)	.18 (.13)	-.011 (.18)	-.033 (.12)	.082 (.13)	.0005 (.11)	.73 (.49)	-.061 (.15)	5.32 (.68)	1583.146	
(97)	Japan 1.03 (.14)	-.52 (.14)	-.048 (.032)	.050 (.033)	.27 (.22)	.020 (.37)	-1.38 (.46)	1.19 (.32)	.29 (.18)	-.12 (.20)	.019 (.17)	.024 (.16)	.40 (.15)	-.27 (.19)	-.039 (.19)	6.43 (.90)	718.170	
(98)	Pakistan .78 (.15)	-.58 (.26)	-.031 (.044)	.039 (.048)	.27 (.37)	-1.34 (.81)	-.84 (.28)	.77 (.23)	.59 (.23)	-.26 (.28)	-.30 (.37)	.090 (.26)	.048 (.26)	-.42 (.42)	.29 (.25)	8.48 (1.10)	647.136	
(99)	Malaysia .44 (.089)	-.053 (.11)	-.012 (.023)	.024 (.028)	-.17 (.13)	-.22 (.37)	-.83 (.26)	.25 (.16)	.18 (.14)	-.59 (.17)	-.043 (.13)	.21 (.12)	-.15 (.11)	.40 (.20)	-.079 (.13)	6.43 (.59)	1110.111	
(101)	Afghanistan .14 (.070)	-.48 (.15)	-.050 (.022)	.054 (.024)	.22 (.19)	-.29 (.36)	-.49 (.14)	-.17 (.12)	.20 (.13)	.20 (.14)	.085 (.17)	-.27 (.15)	-.15 (.13)	.078 (.28)	.11 (.16)	5.34 (.53)	632.067	
(102)	Bangladesh .65 (.070)	-.36 (.15)	-.043 (.022)	.051 (.024)	.032 (.19)	-.17 (.36)	-.56 (.14)	.23 (.12)	.12 (.13)	-.035 (.14)	-.087 (.17)	.13 (.15)	.21 (.13)	.37 (.28)	.10 (.16)	6.75 (.53)	2864.163	

Continued on next page

	log(household income)	male	age	age/10 ²	(as) married	separated, divorced, or widowed	not enough money: food(net)	friends to count on	freedom to choose	perception of corruption	donated time	donatedMoney	helped a stranger	importance of religion	attended church/etc	constant	obs.	R ² (adj)	
(103)	Indonesia	.41	-.093	.001	.0006	-.20	-.61	-.60	.13	.31	-.19	-.095	.068	.090	-.15	-.066	6.30	2432.094	
(105)	India	.63	-.30	-.029	.031	.10	-.045	-.39	.32	.21	-.33	.26	.13	-.057	-.23	.15	7.76	3839.172	
(107)	Thailand	.44	-.26	-.047	.044	-.19	-.096	-.49	.45	.089	-.25	.10	.087	.011	-.039	.19	7.69	2843.099	
(108)	Viet Nam	.37	-.086	-.039	.033	-.016	-.046	-.81	.21	-.036	-.013	.41	.048	.30	.17	.045	7.08	576.149	
(109)	Lao People's Democratic Republic	.16	-.097	-.020	.021	-.045	-.53	-.33	.39	.21	-.32	-.041	.22	.044	.42	-.16	5.32	692.080	
(110)	Cambodia	.34	-.039	.040	-.043	-.30	-.78	-.68	.25	.14	-.10	-.14	.32	.23	.086	-.017	4.60	1428.190	
(88-110)	Asia	.46	-.21	-.027	.030	-.10	-.36	-.59	.27	.22	-.17	.012	.14	.078	.009	.048	6.71	26211	
(111)	Namibia	.28	.14	.019	-.020	-.088	-.13	-.35	.88	.090	-.34	-.045	.43	.21	.14	-.14	4.66	910.154	
(112)	Djibouti	.19	-.025	.014	-.019	.11	.020	-.26	.59	.28	-.38	-.12	.42	.10	.11	-.34	4.99	771.093	
(113)	Tunisia	.007	.0008	-.12	.15	.31	-2.12	-.18	1.55	.76	.42	.80	-.34	.38	.81	.38	4.56	136.219	
(114)	Ethiopia	.86	.026	-.020	.008	.47	.69	-.22	.36	.30	-.20	-.39	.017	.26	-.27	.24	8.13	1060.173	
(115)	Mali	.17	-.12	-.038	.039	.074	-.27	-.17	.40	.57	.27	.091	.19	.077	.31	.33	4.23	769.088	
(116)	Mauritania	.25	.050	.028	-.022	-.38	-.61	-.58	.37	.039	-.076	.069	-.084	.78	-.11	.042	5.07	1900.167	
(117)	Mozambique	.63	-.14	.025	-.034	-.15	-.26	-.55	.078	.15	-.60	-.082	-.16	.14	-.28	.32	7.48	1527.225	
(118)	Niger	.18	-.046	-.007	.005	.033	-.022	-.64	.32	.47	-.086	-.096	.34	.17	.25	.12	3.93	1407.113	
(120)	Senegal	.50	-.22	.002	.0008	-.044	-.25	-.40	.34	.098	-.43	-.053	.29	-.080	.34	-.15	5.99	1639.140	
(122)	Sierra Leone	.089	-.063	-.001	-.002	-.11	-.22	-.17	.44	.53	-.21	.012	-.064	-.049	.033	-.076	3.86	2482.058	

Continued on next page

	log(household income)	male	age	age/10 ²	(as) married	separated, divorced, or widowed	not enough money: food(net)	friends to count on	freedom to choose	perception of corruption	donated time	donatedMoney	helped a stranger	importance of religion	attended church/etc	constant	obs.	R ² (adj)
(123)	Zimbabwe .28 (.065)	-.060 (.16)	-.039 (.026)	.036 (.026)	-.16 (.16)	-.17 (.24)	-.65 (.17)	.61 (.18)	.14 (.17)	-.48 (.35)	-.11 (.19)	.38 (.29)	.15 (.15)	.29 (.25)	-.13 (.21)	5.77 (.64)	1512	.116
(125)	Algeria .30 (.059)	-.18 (.14)	-.069 (.029)	.074 (.035)	.51 (.16)	-.44 (.46)	-.74 (.15)	.89 (.14)	.43 (.13)	-.35 (.21)	.60 (.19)	.61 (.17)	.074 (.14)	.22 (.23)	-.025 (.15)	6.02 (.65)	937	.211
(126)	Zambia .23 (.073)	-.003 (.13)	.010 (.022)	-.023 (.028)	.053 (.19)	.12 (.33)	-.54 (.13)	.51 (.16)	.10 (.14)	-.14 (.25)	-.009 (.16)	.71 (.17)	.13 (.14)	-.052 (.25)	-.11 (.16)	5.38 (.61)	1855	.104
(127)	Malawi .38 (.056)	.20 (.11)	.014 (.019)	-.020 (.022)	-.13 (.17)	-.099 (.23)	-.30 (.12)	.28 (.12)	.33 (.16)	-.27 (.14)	-.24 (.12)	-.051 (.12)	.012 (.12)	.20 (.45)	-.046 (.13)	5.15 (.68)	1819	.135
(128)	South Africa .39 (.051)	-.077 (.11)	.020 (.017)	-.024 (.020)	-.14 (.14)	-.074 (.18)	-.72 (.12)	.53 (.16)	.45 (.14)	-.22 (.18)	.040 (.14)	.041 (.12)	.076 (.12)	.23 (.16)	.023 (.12)	5.31 (.45)	1564	.152
(129)	Benin .19 (.070)	.23 (.13)	.008 (.022)	-.015 (.026)	-.18 (.18)	.012 (.26)	-.55 (.13)	.56 (.13)	.35 (.14)	-.62 (.17)	-.052 (.17)	.30 (.18)	.21 (.14)	.13 (.18)	.22 (.14)	3.73 (.57)	1039	.127
(130)	Madagascar .27 (.070)	.091 (.12)	-.005 (.024)	-.002 (.028)	-.081 (.17)	-.18 (.26)	-.32 (.14)	.32 (.14)	.32 (.12)	.21 (.14)	.38 (.23)	-.005 (.27)	-.26 (.17)	-.26 (.33)	.085 (.14)	5.67 (.59)	943	.094
(131)	Ghana .29 (.11)	.042 (.17)	.025 (.032)	-.031 (.032)	-.35 (.26)	-.27 (.32)	-.47 (.16)	.26 (.20)	.022 (.20)	-.025 (.23)	.21 (.18)	.14 (.17)	-.15 (.17)	.39 (.28)	-.096 (.22)	4.91 (.78)	1227	.088
(132)	Uganda .32 (.058)	-.14 (.097)	.004 (.019)	-.008 (.022)	-.12 (.15)	-.21 (.19)	-.54 (.099)	.31 (.14)	.037 (.11)	-.033 (.15)	-.12 (.12)	.21 (.14)	-.040 (.10)	-.20 (.24)	.17 (.11)	5.13 (.58)	2303	.133
(134)	Sudan .23 (.062)	-.13 (.13)	-.016 (.026)	.029 (.030)	-.037 (.17)	.14 (.37)	-.43 (.15)	.43 (.17)	.13 (.14)	-.25 (.18)	-.083 (.15)	.23 (.15)	.23 (.13)	.64 (.40)	-.20 (.14)	4.88 (.69)	654	.065
(135)	Togo .41 (.087)	.20 (.11)	.012 (.019)	-.019 (.022)	.048 (.14)	.075 (.22)	-.51 (.12)	.60 (.12)	.14 (.11)	-.017 (.18)	-.043 (.13)	.17 (.16)	-.067 (.12)	-.033 (.19)	.18 (.15)	4.29 (.56)	1165	.110
(136)	Syrian Arab Republic .37 (.17)	-.24 (.18)	-.058 (.046)	.079 (.058)	.49 (.21)	-.12 (.45)	-.46 (.25)	.63 (.27)	.24 (.19)	-.60 (.23)	.21 (.21)	.18 (.21)	-.010 (.19)	.10 (.24)	.089 (.21)	6.41 (1.07)	798	.096
(137)	Liberia .20 (.053)	.090 (.11)	.025 (.020)	-.033 (.023)	-.20 (.13)	-.32 (.32)	-.18 (.13)	.63 (.12)	.41 (.13)	-.076 (.19)	.20 (.12)	.10 (.13)	-.20 (.16)	.51 (.31)	-.017 (.15)	3.67 (.59)	1634	.092
(141)	Central African Republic .86 (.077)	.037 (.12)	-.021 (.025)	.031 (.034)	.001 (.14)	.14 (.27)	-.47 (.15)	-.36 (.14)	.57 (.13)	-.61 (.18)	.19 (.14)	-.20 (.17)	-.64 (.14)	-.30 (.31)	-.48 (.18)	9.77 (.67)	816	.266
(142)	Chad .21 (.062)	8e-05 (.12)	.025 (.017)	-.027 (.020)	-.19 (.17)	-.26 (.25)	-.15 (.11)	.062 (.11)	.38 (.13)	-.16 (.20)	.005 (.18)	.14 (.19)	.18 (.15)	.49 (.21)	-.15 (.16)	3.23 (.45)	1486	.089
(143)	Burundi .32 (.065)	-.16 (.14)	-.009 (.021)	.0002 (.022)	.068 (.20)	-.10 (.29)	-.72 (.14)	.021 (.12)	.49 (.17)	.077 (.20)	.46 (.23)	.14 (.24)	-.17 (.20)	-.12 (.29)	-.15 (.28)	5.44 (.49)	802	.101
(144)	Democratic Republic of the Congo .32 (.065)	-.033 (.14)	.020 (.021)	-.025 (.022)	-.068 (.20)	.078 (.29)	-.46 (.14)	.44 (.12)	.083 (.17)	-.47 (.20)	.18 (.23)	-.057 (.24)	.010 (.20)	-.042 (.29)	.089 (.28)	5.62 (.49)	894	.095

Continued on next page

	log(household income)	male	age	age/10 ²	(as) married	separated, divorced, or widowed	not enough money: food(net)	friends to count on	freedom to choose	perception of corruption	donated time	donatedMoney	helped a stranger	importance of religion	attended church/etc	constant	obs.	R ² (adj)
(145)	Cameroon .35 (.054)	-.065 (.10)	-.031 (.020)	.026 (.024)	-.095 (.13)	-.53 (.20)	-.74 (.10)	.52 (.11)	.31 (.10)	-.079 (.16)	.11 (.13)	.19 (.15)	.28 (.11)	.28 (.26)	-.18 (.13)	5.20 (.55)	2348.179	
(146)	Burkina Faso .21 (.045)	.11 (.10)	-.015 (.019)	.021 (.022)	.029 (.13)	.20 (.25)	-.43 (.11)	.18 (.12)	.34 (.10)	.28 (.15)	.17 (.17)	-.23 (.20)	.17 (.10)	.31 (.20)	.088 (.12)	3.92 (.51)	1038.081	
(147)	Botswana .58 (.063)	-.17 (.16)	-.007 (.026)	-.007 (.029)	.23 (.20)	.37 (.26)	-.85 (.18)	.83 (.22)	.42 (.20)	-.39 (.20)	-.11 (.21)	.31 (.21)	-.008 (.15)	-.17 (.19)	.32 (.17)	5.44 (.54)	1182.201	
(148)	Angola .035 (.15)	.21 (.22)	-.026 (.040)	.004 (.049)			-.56 (.27)	.44 (.23)	.55 (.27)	-.078 (.45)	.36 (.25)	-.48 (.25)	.78 (.27)	.74 (.37)	-.27 (.30)	3.77 (1.06)	340.145	
(149)	Tanzania .40 (.079)	-.20 (.14)	.087 (.026)	-.11 (.031)	-.17 (.16)	.49 (.31)	-.25 (.15)	-.24 (.20)	.23 (.15)	-.19 (.29)	.53 (.18)	.30 (.16)	-.14 (.15)	-.85 (.31)	.21 (.18)	5.55 (.74)	1067.139	
(150)	Kenya .44 (.049)	.015 (.081)	-.043 (.022)	.047 (.027)	-.059 (.094)	.066 (.17)	-.27 (.082)	.19 (.099)	-.064 (.14)	-.38 (.14)	.21 (.094)	.25 (.10)	.024 (.083)	.30 (.22)	.23 (.093)	6.23 (.49)	2979.134	
(151)	Nigeria .25 (.055)	-.024 (.095)	.020 (.019)	-.022 (.021)	-.20 (.13)	-.074 (.25)	-.61 (.091)	.51 (.11)	.27 (.094)	-.35 (.16)	.24 (.11)	.16 (.10)	-.033 (.098)	.37 (.20)	-.021 (.16)	4.82 (.49)	1852.091	
(111-151)	Africa .31 (.010)	-.019 (.019)	.002 (.003)	-.006 (.004)	-.041 (.025)	-.079 (.041)	-.45 (.021)	.37 (.022)	.25 (.021)	-.21 (.028)	.051 (.024)	.15 (.025)	.089 (.020)	.092 (.040)	.037 (.024)	5.17 (.097)	44855	
(152)	Iran .75 (.12)	-.42 (.16)	-.076 (.035)	.084 (.040)	.48 (.25)	-.52 (.61)	-.87 (.18)	.29 (.17)	.41 (.17)	-.088 (.24)	.034 (.25)	-.13 (.18)	.29 (.17)	.048 (.22)	-.20 (.17)	7.40 (.69)	779.143	
(153)	Israel .71 (.11)	-.033 (.12)	-.049 (.023)	.033 (.025)	.34 (.17)	.17 (.29)	-.78 (.23)	.54 (.22)	.38 (.13)	-.76 (.25)	-.044 (.15)	-.23 (.15)	-.25 (.13)	-.037 (.16)	.38 (.16)	8.98 (.53)	1117.151	
(158)	Egypt .70 (.11)	-.62 (.18)	-.10 (.040)	.12 (.043)	.48 (.32)	.058 (.46)	-.62 (.18)	.72 (.19)	.46 (.16)		.13 (.30)	.23 (.22)	-.024 (.17)	-.91 (1.43)	.079 (.18)	8.25 (1.64)	1032.140	
(160)	Lebanon .75 (.095)	-.31 (.13)	-.089 (.026)	.083 (.030)	.24 (.17)	.67 (.41)	-.52 (.18)	.52 (.17)	.33 (.13)	-.38 (.25)	.14 (.16)	.49 (.14)	.33 (.13)	.28 (.21)	-.032 (.13)	6.85 (.58)	1746.142	
(163)	Saudi Arabia .20 (.073)	-.33 (.15)	-.073 (.039)	.090 (.048)	.13 (.17)	-.23 (.38)	-.16 (.26)	.39 (.15)	.12 (.14)	.17 (.15)	-.021 (.24)	.025 (.14)	-.006 (.14)	-.50 (.67)	.40 (.17)	8.12 (1.02)	812.047	
(152-163) Mid-east	Persia and .54 (.043)	-.30 (.064)	-.073 (.014)	.069 (.015)	.28 (.087)	.10 (.18)	-.63 (.089)	.47 (.078)	.33 (.065)	-.12 (.10)	.037 (.088)	.078 (.071)	.055 (.065)	.048 (.11)	.12 (.071)	7.91 (.32)	5486	
(1)	All countries .41 (.007)	-.12 (.011)	-.029 (.002)	.026 (.002)	.005 (.015)	-.13 (.024)	-.57 (.013)	.39 (.015)	.29 (.012)	-.23 (.016)	.077 (.013)	.15 (.013)	.084 (.011)	.033 (.017)	.049 (.013)	6.56 (.053)	147249	

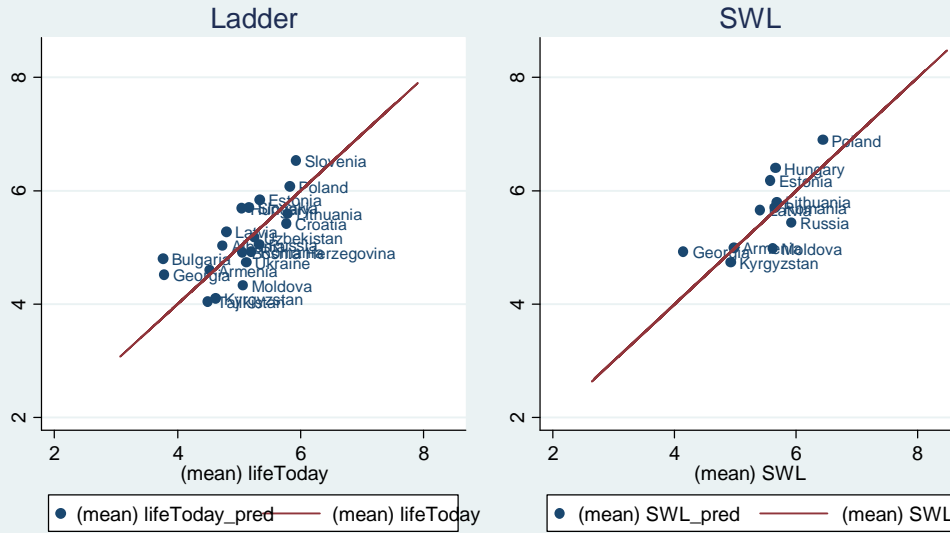
Variable	Mean	StdDev	Min	Max	Obs
ladder	5.43	2.19	0	10	342329
SWL	5.95	2.45	0	10	115402
$\frac{1}{2}(\text{ladder}+\text{SWL})$	5.77	2.09	0	10	114549
log(household income)	-2.40	1.56	-11.5	2.66	233658
incomeh2	.25	.41	1e-05	14.3	233658
male	.46	.50	0	1	350017
age	39.4	16.9	15	99	348463
$(\text{age}/10)^2$	18.4	15.4	2.25	98.0	348463
(as) married	.54	.50	0	1	350017
separated, divorced, or widowed	.11	.32	0	1	350017
not enough money (food)	.30	.46	0	1	324632
not enough money: food(net)	-.009	.43	-1.35	1.16	219207
freedom to choose	.71	.45	0	1	310916
perception of corruption	.78	.37	0	1	258845
donated time	.22	.42	0	1	299997
donatedMoney	.31	.46	0	1	298154
helped a stranger	.47	.50	0	1	297325
friends to count on	.82	.39	0	1	326415
attended church/etc	.49	.50	0	1	327623
importance of religion	.73	.44	0	1	325364

Table 7: **Summary statistics: micro variables.**

Variable	Mean	StdDev	Min	Max	Obs
<i>nation:</i> ladder	5.37	1.09	3.01	7.94	145
<i>nation:</i> SWL	5.84	1.45	2.45	8.50	104
<i>nation:</i> $\frac{1}{2}(\text{ladder}+\text{SWL})$	5.66	1.28	2.73	8.03	104
log(GDP per cap., PPP,2003/5)	-1.97	1.27	-5.07	.52	184
GDP per cap., PPP,2003/5	.28	.32	.006	1.68	184
healthy life expectancy	57.5	11.2	28.5	75	181
healthy life expectancy (net)	.031	6.25	-27.4	11.3	173
<i>nation:</i> not enough money: food(net)	-4e-10	.12	-.42	.35	142
<i>nation:</i> perception of corruption	.77	.18	.15	.98	138
<i>nation:</i> freedom to choose	.69	.16	.26	.96	143
<i>nation:</i> friends to count on	.81	.13	.29	.97	144
<i>nation:</i> donatedMoney	.30	.18	.027	.76	144
<i>nation:</i> donated time	.21	.10	.034	.47	145
<i>nation:</i> helped a stranger	.46	.12	.17	.82	145
<i>nation:</i> importance of religion	.72	.25	.16	.99	144
<i>nation:</i> attended church/etc	.48	.22	.077	.89	144

Table 8: **Summary statistics: macro variables.**

Figure 4: Actual and Predicted National Well-being
Country Group 1



These are scatter plots of national averages; The model used for prediction is the same as the first column in Table 1

Figure 4: Actual and Predicted National Well-being
Country Group 2



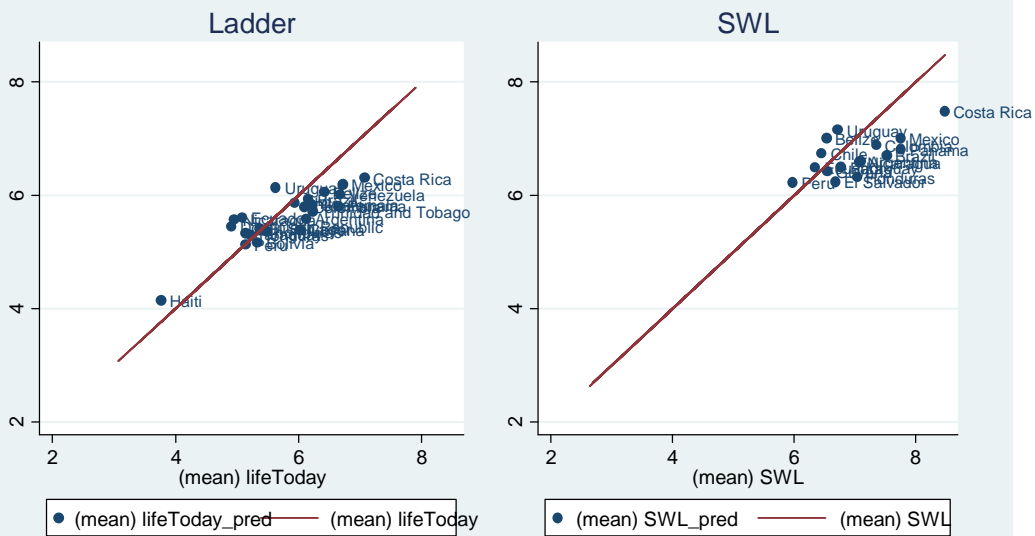
These are scatter plots of national averages; The model used for prediction is the same as the first column in Table 1

Figure 4: Actual and Predicted National Well-being
Country Group 3



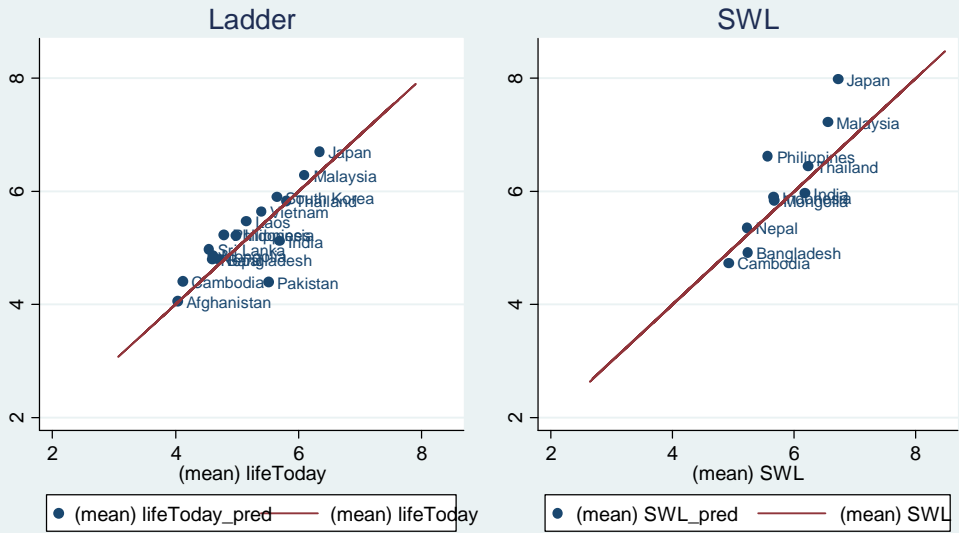
These are scatter plots of national averages; The model used for prediction is the same as the first column in Table 1

Figure 4: Actual and Predicted National Well-being
Country Group 4



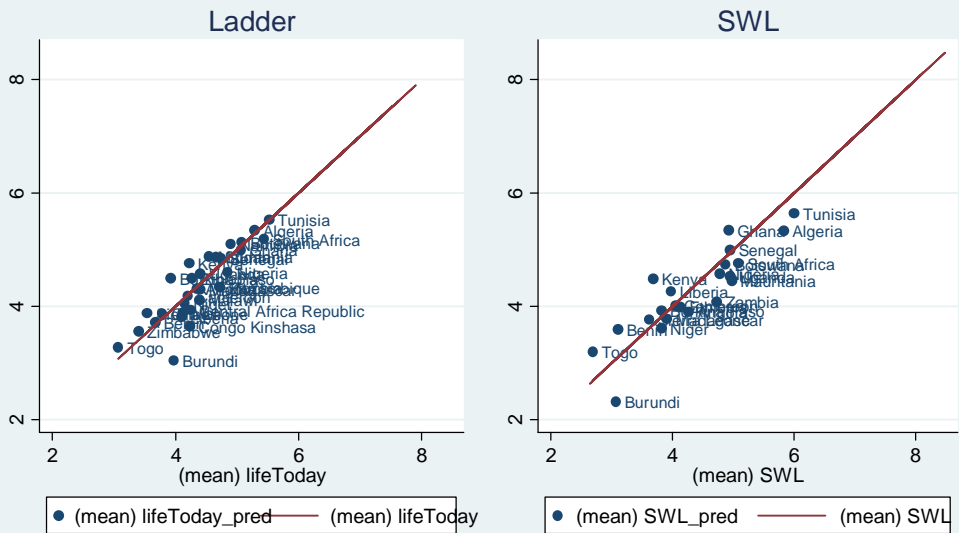
These are scatter plots of national averages; The model used for prediction is the same as the first column in Table 1

Figure 4: Actual and Predicted National Well-being
Country Group 5



These are scatter plots of national averages; The model used for prediction is the same as the first column in Table 1

Figure 4: Actual and Predicted National Well-being
Country Group 6



These are scatter plots of national averages; The model used for prediction is the same as the first column in Table 1